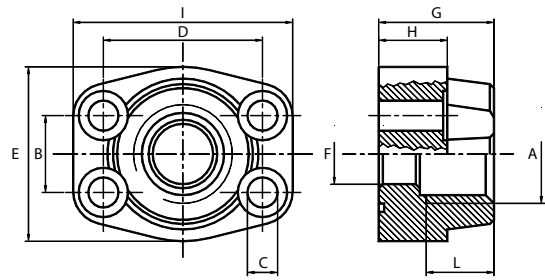


Pumpenflansch TRF

4 Loch gerader Flansch mit Innengewinde

Material:
Stahl



	Bestell-Nr.	p max in bar	Flanscbild	A	B	C	D	E	F	G	H	I	L	Schrauben im Lieferumfang enthalten	U.N.C.separat erhältlich	O-Ring
3000PSI	670-060-01000	348	1/2"	3/8"	17,48	8,5	38,10	46	13	36	16	55	20	M8 x 30	5/16" x 1-1/4"	4075
	670-060-01050	348	1/2"	1/2"	17,48	8,5	38,10	46	13	36	16	55	20	M8 x 30	5/16" x 1-1/4"	4075
	670-060-01100	348	3/4"	1/2"	22,23	10,5	47,63	51	18	36	18	66	21	M10 x 35	3/8" x 1-1/2"	4100
	670-060-01150	348	3/4"	3/4"	22,23	10,5	47,63	51	19	36	18	66	21	M10 x 35	3/8" x 1-1/2"	4100
	670-060-01200	348	1"	3/4"	26,19	10,5	52,37	56	19	38	21	71	23	M10 x 35	3/8" x 1-1/2"	4131
	670-060-01250	348	1"	1"	26,19	10,5	52,37	56	25	38	21	71	23	M10 x 35	3/8" x 1-1/2"	4131
	670-060-01300	279	1-1/4"	1"	30,18	11,5	58,72	68	25	41	25	81	23	M10 x 35	7/16" x 1-3/4"	4150
	670-060-01350	279	1-1/4"	1-1/4"	30,18	11,5	58,72	68	32	41	25	81	23	M10 x 35	7/16" x 1-3/4"	4150
	670-060-01400	210	1-1/2"	1-1/4"	35,71	13,5	69,85	78	32	45	27	95	25	M12 x 45	1/2" x 1-3/4"	4187
	670-060-01450	210	1-1/2"	1-1/2"	35,71	13,5	69,85	78	38	45	27	95	25	M12 x 45	1/2" x 1-3/4"	4187
	670-060-01500	210	2"	1-1/2"	42,88	13,5	77,77	91	38	45	25	102	25	M12 x 45	1/2" x 1-3/4"	4225
	670-060-01550	210	2"	2"	42,88	13,5	77,77	91	51	45	25	102	25	M12 x 45	1/2" x 1-3/4"	4225
	670-060-01600	175	2-1/2"	2"	50,80	13,5	88,90	103	51	50	25	114	30	M12 x 45	1/2" x 1-3/4"	4275
	670-060-01650	175	2-1/2"	2-1/2"	50,80	13,5	88,90	103	63	50	25	114	30	M12 x 45	1/2" x 1-3/4"	4275
670-060-01700	138	3"	2-1/2"	61,93	17	106,40	124	63	50	27	135	30	M16 x 55	5/8" x 2"	4337	
670-060-01750	138	3"	3"	61,93	17	106,40	124	73	50	27	135	30	M16 x 55	5/8" x 2"	4337	
6000PSI	670-060-01800	420	1/2"	3/8"	18,24	8,5	40,49	46	13	36	16	55	20	M8 x 30	5/16" x 1-1/4"	4075
	670-060-01850	420	1/2"	1/2"	18,24	8,5	40,49	46	13	36	16	55	20	M8 x 30	5/16" x 1-1/4"	4075
	670-060-01900	420	3/4"	1/2"	23,80	10,5	50,80	56	18	36	21	71	21	M10 x 35	3/8" x 1-1/2"	4100
	670-060-01950	420	3/4"	3/4"	23,80	10,5	50,80	56	19	36	21	71	21	M10 x 35	3/8" x 1-1/2"	4100
	670-060-02000	420	1"	3/4"	27,76	13	57,15	68	19	42	25	81	23	M12 x 45	7/16" x 1-3/4"	4131
	670-060-02050	420	1"	1"	27,76	13	57,15	68	25	42	25	81	23	M12 x 45	7/16" x 1-3/4"	4131
	670-060-02100	420	1-1/4"	1"	31,75	15	66,68	78	25	45	27	95	25	M14 x 45	1/2" x 1-3/4"	4150
	670-060-02150	420	1-1/4"	1-1/4"	31,75	15	66,68	78	32	45	27	95	25	M14 x 45	1/2" x 1-3/4"	4150
	670-060-02200	420	1-1/2"	1-1/4"	36,50	17	79,38	94	32	51	29	112	29	M16 x 55	5/8" x 2"	4187
	670-060-02250	420	1-1/2"	1-1/2"	36,50	17	79,38	94	38	51	29	112	29	M16 x 55	5/8" x 2"	4187